

Program Overview
2026/27





Our Programs



**Full Time
School**



**Part Time
School**



**MASTER TREE
Enrichment**
Screen Free!



Our Add Ons



**AFTER CLASS
Enrichment**



**Tutoring & Add
On Services**



Program Overview

Full Time School

- Grades K-8
- 9 AM - 3 PM
- **5 Days a Week, 180 Day Instruction**
- Private School or Homeschool Status
- Norm Referenced Testing
- Aligns with FL BEST Standards
- Proven Academic Excellence
- Tailored Student Needs
- Project Based & Cross Curricular Academics
- Life Skill, Movement, Leadership, Social Emotional, and Nature Focused Enrichment
- After Class Extracurriculars as add ons (Soccer, Chess, Art & more)

Part Time School

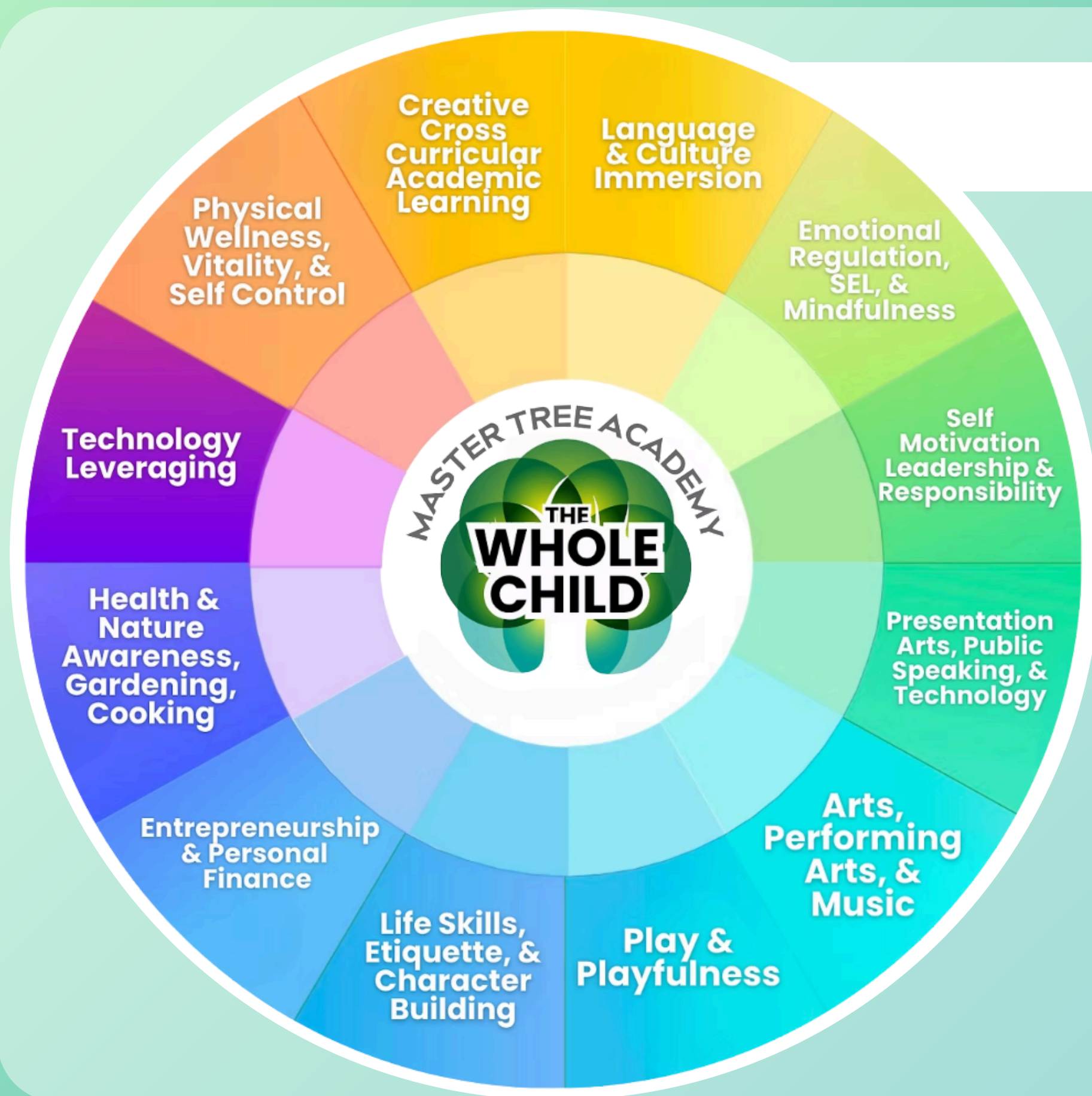
- Grades K-8
- 9 AM - 3 PM
- **3 Day a Week Instruction**
- Homeschool Status
- Norm Referenced Testing
- Aligns with FL BEST Standards
- Tailored Student Needs
- Project Based & Cross Curricular Academics (Dependent on Days Attending)
- Life Skill, Movement, Leadership, Social Emotional, and Nature Focused Enrichment (Dependent on Days Attending)
- After Class Extracurriculars as add ons (Soccer, Chess, Art & more)

MASTER TREE Enrichment

- Ages 5 -12
- 10 AM - 2 PM
- **1 Day | 2 Days | 3 Days options**
- Tuesday, Thursday, Friday
- Waldorf Inspired
- All in-One Enrichment
- STEM & Humanities Projects
- Creative Life Skills
- Movement
- Outdoor & Nature - Gardening & Recess
- Traditional and Performing Arts
- After Class Extracurriculars as add ons (Soccer, Chess, Art, Martial Arts & more)



Our Curriculum



- Nurtures the mind, body, soul, and spirit through a Waldorf Inspired, **WHOLE CHILD** approach
- Inspires a lifelong love of learning
- Creates a deep connection to the natural world
- Fosters a love of discovery through hands-on exploration, creativity, and inquiry
- Cultivates a love of humanity through meaningful stories, cultural appreciation, and community values
- Celebrates the beauty of the world through art, nature, and interdisciplinary learning
- Teaches core values and character development, including leadership, respect, discipline, honesty, and integrity
- Builds emotional intelligence, self-awareness, and critical thinking
- Teaches practical life skills for purposeful, independent living
- Supports overall well-being through holistic, balanced education
- Guides children to thrive with confidence, compassion, and resilience in an ever-changing world



MASTER TREE
ACADEMY

Full Time School

SAMPLE SCHEDULE

SCHEDULE CHANGES PER SEMESTER

	MONDAY	TUESDAY	WEDNESDAY	THURSDAY	FRIDAY
8:45-9 AM	Drop Off	Drop Off	Drop Off	Drop Off	Drop Off
9 AM	School Starts	School Starts	School Starts	School Starts	School Starts
9 - 9:15 AM	Block 1: Morning Circle	Block 1: Morning Circle	Block 1: Morning Circle	Block 1: Morning Circle	Block 1: Morning Circle
9:15-10:30 AM	Block 2 - Language Arts	Block 2 - Language Arts	Block 2 - Language Arts	Block 2 - Language Arts	Block 2 - Language Arts
10:30-10:45 AM	Snack Break	Snack Break	Snack Break	Snack Break	Snack Break
10:45-12:00 PM	Block 3 - Math	Block 3 - Math	Block 3 - Math	Block 3 - Math	Block 3 - Math
12:00-12:45 PM	Block 4 - Sci. / Social Studies	Block 4 - Enrichment Block 1	Block 4 - Sci. / Social Studies	Block 4 - Enrichment Block 1	Block 4 - Sci. / Social Studies
12:45-1:45 PM	Lunch & Recess	Lunch & Recess	Lunch & Recess	Lunch & Recess	Lunch & Recess
1:45-2:00 PM	Immersion	Immersion	Immersion	Immersion	Immersion
2:00-2:45 PM	Block 5 - Enrichment Block 2	Block 5 - Enrichment Block 2	Block 5 - Enrichment Block 2	Block 5 - Enrichment Block 2	Block 5 - Enrichment Block 2
2:45 - 3 PM	Journal / Planner	Journal / Planner	Journal / Planner	Journal / Planner	Journal / Planner
3 - 3:30 PM	Pick Up Window Study Hall	Pick Up Window Study Hall	Pick Up Window Study Hall	Pick Up Window Study Hall	Pick Up Window Study Hall
3:30 - 4:30 PM	After Class Enrichment & After Care	After Class Enrichment & After Care	After Class Enrichment & After Care	After Class Enrichment & After Care	After Class Enrichment & After Care



**MASTER TREE
ACADEMY**

Enrollment Check List

Full Time School

Part Time School

**Watch Virtual Tour &
Check Out
our Social Media**

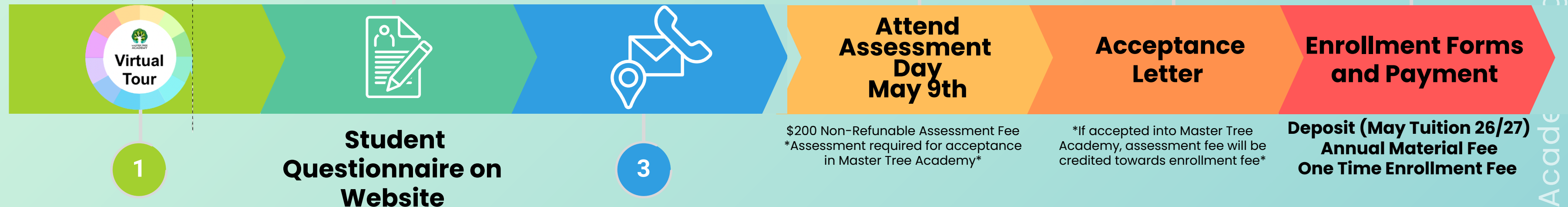
2

**Contact
Admissions &
Schedule a Tour**

4

5

6



\$200 Non-Refunable Assessment Fee
*Assessment required for acceptance
in Master Tree Academy*

*If accepted into Master Tree
Academy, assessment fee will be
credited towards enrollment fee*

**Deposit (May Tuition 26/27)
Annual Material Fee
One Time Enrollment Fee**

Enrollment

If you are interested in applying for a placement of your student, please book a student assessment Day with us by submitting your student application form. Once your application and student assessment is approved and you decided on the choice program your student. The last step of your enrollment process takes you through submitting applicable forms and making your tuition deposit and enrollment fee (due at time of enrollment) and material fee investment. Depending on which Master Tree Academy program you choose, additional forms (health exams, vaccination records may need to be submitted. Please review the Parent Handbook. See the links for downloading and printing your first form.

Tuition Payments & Discounts

Master Tree Academy annual tuition can be made in monthly installments or as one-time annual payment with 5% tuition discount. Payments to Master Tree Academy can be done by check, online payments (Stripe, Paypal, Credit Cards) or through ZELLE or ACH wire directly to our bank account. In addition, we grant a 10% Sibling Discount on your tuition for the first, 10% for each additional sibling (material and enrollment fees are not discounted.) When paying with online payment processors, additional charges (up to 3%) may occur for you. Monthly tuition installments are due on the 5th of the month. A late payment charge of \$29 occurs after.

Student Assessment & Placement (Grade)

Student placement depends on the assessment and is at the discretion of the teacher and administration. Master Tree Academy takes all elements into consideration when delegating classroom/tier/grade placement.

MasterTreeAcademy



NEW AND PROSPECTIVE FAMILIES ASSESSMENT

DAY FOR ENROLLMENT


SATURDAY, MAY 9TH

**2026
/27**

SCHOOL YEAR

**REGISTER
NOW**





	GRADE IN FALL Kindergarten - 1 st Grade	ARRIVE AT: 10 AM
	<ul style="list-style-type: none"> • Play, Group Based Assessment 	
	2 nd Grade - 4 th Grade	ARRIVE AT: 12:30 PM
	<ul style="list-style-type: none"> • Group Based, Hands on Assessment • 1:1 Academic Assessment 	
	5 th Grade - 8 th Grade	ARRIVE AT: 2:30 PM
	<ul style="list-style-type: none"> • Group Based, Hands on Assessment • 1:1 Academic Assessment 	



**Parents!
Join Us!**

We will host a parent informational session about our values and philosophy during your child's assessment time.

 Bring a small snack and water 

\$200 Non-Refunable Assessment Fee
If accepted into Master Tree Academy, assessment fee will be credited towards enrollment fee
Assessment required for acceptance in Master Tree Academy



**MASTER TREE
ACADEMY**

MONTHLY TUITION

FULL TIME SCHOOL

\$1,399 /Month

\$13,990 /Year

- ✓ 180 Days, 5 Days a Week Full Time School
- ✓ Homeschool Status or Private School Status
- ✓ \$499 One Time Registration Fee
- ✓ \$999 Annual Material Fee

PART TIME SCHOOL

\$1,199 /Month

\$11,990 /Year

- ✓ 3 Days a Week, 10 Month Program
- ✓ Academics + Enrichment
- ✓ \$299 One Time Registration Fee
- ✓ \$799 Annual Material Fee



MASTER TREE AFTER CLASS

MONTHLY TUITION

AFTER CLASS ENRICHMENT

\$37.50 / session
\$150 / Month
per Enrichment

\$35.00 / session
\$1,120 / Year
per Enrichment

- ✓ **1 After Class** Enrichment per week : 3:30-4:30 PM
- ✓ Register every **8 Weeks** (8 Month yearly program)
- ✓ **Qualified** Professionals
- ✓ Examples: **Chess, Soccer, Dance, Music Lessons**
- ✓ **Cut the Commute!**
- ✓ **All in One Schooling**

*Pricing May Vary Depending on Activity

After Care and Clubs

Monthly Plan

\$200 / month
(\$10/day)

Yearly Plan

\$1,800 / year
(\$9/day)

Drop in Rate

\$15 / day

- ✓ **M-F, 3:30 PM - 5:00 PM**
- ✓ **Includes** Homework Help, snack, semi-structured activities (such as Lego), outside time
- ✓ Monthly/Yearly plan includes **Master Tree Clubs**.
- ✓ Does not include **After Class Enrichment - sold separately**.
- ✓ Late fee of \$5 per 10 minutes



Add On Services

Tutoring Monthly Plans

1:1 Tutoring

*Subject to Availability

Subject Specific or General Tutoring

60 or 45 Minute 1:1 Tutoring with Qualified Teacher
 Math, Language Arts, Science, Social Studies, or Homework Help

	45 Min	60 Min
One Time	\$35 /session	\$45 /session
Monthly Plans		
1 Session a Week	\$140 /month	\$180 /month
2 Sessions a Week	\$265 /month	\$335 /month
3 Sessions a Week	\$335 /month	\$495 /month
4 Sessions a Week	\$480 /month	\$640 /month
5 Sessions a Week	\$575 /month	\$750 /month

Orton Gillingham Reading Intervention

60 Minute 1:1 Tutoring with Qualified Teacher
 Structured literacy support for students with dyslexia or reading challenges.

One Time	\$75 / session
Monthly Plans	
1 Session a Week	\$280 / month
2 Sessions a Week	\$540 / month
3 Sessions a Week	\$780 / month
4 Sessions a Week	\$1,000 / month
5 Sessions a Week	\$1,200 / month

Catch Up Tutoring (For Full Time Students)

Support After Planned Absences

60-Minute 1:1 Sessions

Designed for **full-time enrolled** students who miss class due to travel, illness, or other planned absences.

These sessions ensure your child stays on track academically by reviewing missed lessons and reinforcing key concepts.

\$35 / session

Small Group Tutoring

Orton Gillingham Reading Intervention Class

60 Minute Reading Intervention Small Group Tutoring

Structured literacy support for students with dyslexia or reading challenges.

Group/ Class Tutoring
3:30 - 4:30 PM

- **Once a week**
- **Snack is provided**
- **4-5 Students**
- **Certified Reading Teacher**
- **Orton Gillingham approach**
- **Reading Lessons and Games**

\$150 / Month
 (\$37.50/session)



**MASTER TREE
ACADEMY**

Investment for your Student

Full Time School

Part Time School

ACADEMY

Due at
Enrollment

Academy Plans	FULL TIME 180 Days Full Curriculum	PART TIME (3 Days a Week)
Annual Tuition (10 Monthly Payments)	\$13,990 (\$1,399 a month)	\$11,990 (\$1,199 a month)
Material Fee (annual one-time payment)	\$999	\$799
Enrollment Fee (new family one-time payment)	\$499	\$499
Deposit (one month tuition deposit for monthly payment option; credited to May 2026/27)	\$1,399	\$1,199
DUE AT ENROLLMENT (Material Fee , Enrollment Fee, and Deposit) (monthly payment option)	\$2,897	\$2,497
Total Annual Tuition with Enrollment Fees	\$15,488	\$14,487
Due at RE-Enrollment (Deposit and Material Fee) (monthly payment option)	\$2,398	\$1,998



**MASTER TREE
ACADEMY**

SCHOOL CALENDAR

2026/27



PUBLIC HOLIDAYS (No School)

STARTS

FINISHES

First Day of School All Students

Monday, August 10th

Labor Day Holiday

Monday, September 7th

Thanksgiving Break

Monday, November 23rd

Friday, November 27th

Winter Break

Monday, December 21st

Tuesday, January 5th
(First Day on 6th)

Martin Luther King, Jr. Day

Monday, January 18th

President's Day

Monday, February 15th

Spring Break

Monday, March 15th

Friday, March 19th

Good Friday

Friday, March 26th

Last Day of School

Friday, May 28th

Summer Break

Monday, May 31st

Mon., August 9th, 2027

HURRICANE DAYS: School-closures and/or Hurricane-Days follow the Orange County advisory board, and may need to be added.



MTA FESTIVALS & SPECIAL EVENTS

IN SCHOOL 2026

Meet the Teacher Day (New Students)	Friday, August 7th, 11AM-2PM
First Day of School / Welcome Week	Monday, August 10th
Rose Ceremony for Kindergarteners	Friday August 14 th 2 PM - 3 PM
Fall Festival OPEN HOUSE	Friday, September 25th 2 PM - 4 PM
Poetry Cafe (End of Quarter 1)	Friday, October 9th 1 PM - 3 PM
International Thanksgiving Luncheon	Friday, November 20th 1 PM - 3 PM
Annual Winter Theater Performance	Wednesday, December 16 th 2:30 PM- 3PM
Poetry Cafe (End of Quarter 2)	Thursday, December 17 th 1 PM-3 PM
Winter Solstice Spiral	Friday, December 18 th 2 PM-3 PM

MTA FESTIVALS & SPECIAL EVENTS

IN SCHOOL 2027

Parent Education Nights	Monthly
Family Fun Nights	Quarterly
STEM Day	TBA
Valentine's Dance	Friday, February 12th 1:30 PM - 3 PM
Poetry Cafe (End of Quarter 3)	Thursday, March 11th 1:00 PM
Earth Day OPEN HOUSE Farmer's Market	Thursday, April 22 nd 2 PM-5PM
Annual Field Trip	TBA
Annual Student Theater Performance	Wednesday, May 19 th 2:30 PM - 4 PM
Poetry Cafe (End of Quarter 4)	Wednesday, May 26 th 1 PM-3 PM
Graduation Ceremony - Rose Ceremony for 6th /8th Graders	Friday, May 28 th 2 PM - 3 PM

***Calendar subject to change**

